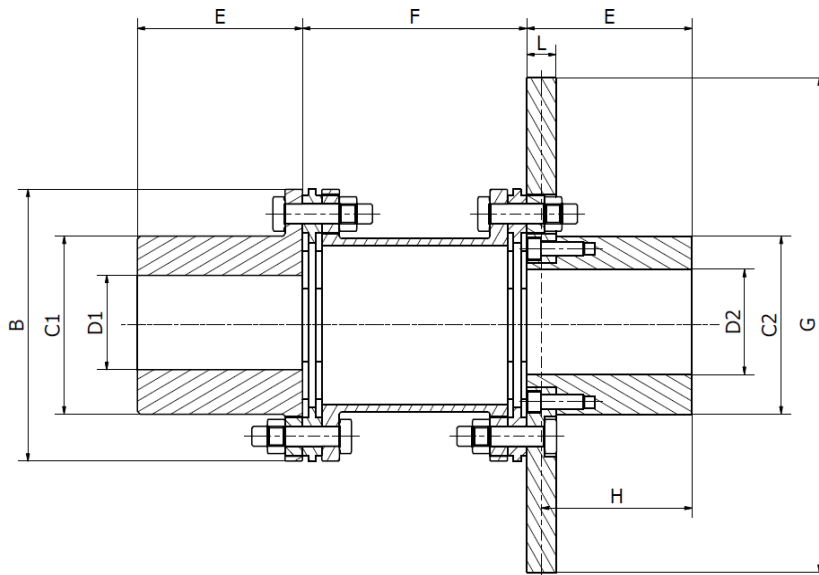


FV-A- Brake disc



- All steel coupling with brake disc
- Plates AISI 304
- Available with 4-6-8 bolts
- Maintenance free
- Backlash free
- Temperature range -40°C / + 150°C

PRODUCT CODE KEY - EXAMPLE

FV	6	A	95	42	38	95	S
Model							
Number of bolts							
Design							
Size							
Bore D1							
Bore D2							
DBSE "F" dimension							
Brake disc according text specifications							

	TKN Nm	TKMax Nm	Speed Rpm-max	Δ kw (°)	Δ ka mm	D1 max/mm	C1 mm	D2 max/mm	C2 mm	B mm	E mm	F mm	GxL mm	H mm
FV-A														
6A-120	1300	2600	4300 3800	0,7	\pm 3.1	70	97	55	97	148	97	o.r	355x30 400x30	82
6A-135	2500	5000	3800 3300 3000	0,7	\pm 3.4	80	110	65	110	170	110	o.r	400x30 450x30 500x30	95
6A-176	5000	10000	3000 2700 2400	0,7	\pm 4.1	100	140	75	140	220	140	o.r	500x30 560x30 630x30	125
6A-186	6000	12000	3000 2700 2400	0,7	\pm 4.3	110	152	80	152	226	152	o.r	500x30 560x30 630x30	137
6A-200	6500	13000	3000 2700 2400	0,7	\pm 4.5	120	165	90	165	240	165	o.r	500x30 560x30 630x30	150
6A-225	11000	22000	3000 2700 2400	0,7	\pm 4.8	135	185	100	185	275	185	o.r	500x30 560x30 630x30	170
6A-245	12000	24000	2700 2400 2100	0,7	\pm 5.0	150	205	110	205	296	205	o.r	560x30 630x30 710x30	190
8A-210	9000	18000	2400 2100	0,5	\pm 2.0	125	175	90	175	250	175	o.r	630x30 710x30	160
8A-230	15000	30000	2100 1900	0,5	\pm 2.2	140	190	105	190	277	190	o.r	710x30 800x30	175
8A-245	21000	42000	2100 1900	0,5	\pm 2.3	150	200	110	200	297	200	o.r	710x30 800x30	185

The permitted shaft misalignment are maximum values and must not occur in the same time.
 TKN is calculated for 24H continuous operation and maximum 20 start-up per hour - For sizing see related page
 TKMax is permitted only five times per hour
 Different design and sizes are possible