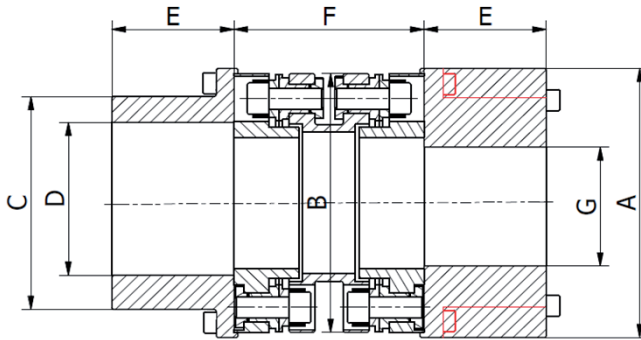


FV-KUPPLUNG

FV-G



- All steel coupling with intermediate unit
- Design according API
- Plates AISI 304
- Maintenance free
- Backlash free
- Temperature range -40°C / + 150°C
- ATEX CE Ex - Possible on request

PRODUCT CODE KEY - EXAMPLE

FV	6	G	96	90	55	140	S
Model							
Number of bolts							
Design							
Size							
Bore D1							
Bore D2							
DBSE "F" dimension							
Special design according text specification							

	TKN	TKMax	Speed	Δ kw	Δ ka	\varnothing D/G	A	B	C	E	F
	Nm	Nm	Rpm-max	(°)	mm	Max mm	mm	mm	mm	mm	mm
FV-G											
6G-58	150	300	7000	0,7	±1	40/51	86	79	56	40	o.r.
6G-74	350	700	6000	0,7	±1.3	50/70	105	98	70	45	o.r.
6G-96	750	1500	5200	0,7	±1.5	65/90	130	123	90	55	o.r.
6G-115	1350	2700	4800	0,7	±2.0	80/102	152	145	112	62	o.r.
6G-140	2400	4800	4400	0,7	±2.5	90/121	179	172	130	70	o.r.
6G-159	4000	8000	4200	0,7	±2.8	115	205	197	162	90	o.r.
6G-179	5300	10500	4000	0,7	±3.3	125	226	219	175	95	o.r.
6G-200	6800	12500	3800	0,7	±3.8	140	247	240	195	107	o.r.
6G-220	10000	20000	3700	0,7	±4.3	155	272	267	215	115	o.r.
6G-245	14000	27000	3600	0,7	±5.0	170	300	293	235	130	o.r.
6G-262	17500	34000	3400	0,7	±5.5	185	325	315	255	150	o.r.

The permitted shaft misalignment are maximum values and must not occur in the same time.

TKN is calculated for 24H continuous operation and maximum 20 start-up per hour - For sizing see related page

TKMax is permitted only five times per hour