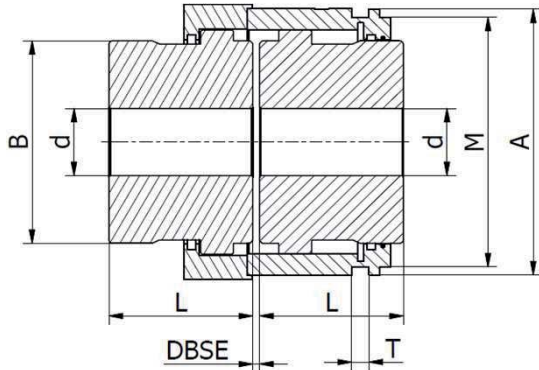


FV-KUPPLUNG

FV-F-DI



- Disengageable gear coupling
- Engage only standstill
- Design complete of lever is available
- Angular misalignment +/- 0,4°
- Temperature range -20°C / + 80°C

PRODUCT CODE KEY - EXAMPLE

	FV	F	203	DI	100	90	5	S
Model								
Design								
Size								
Construction								
Bore D1								
Bore D2								
DBSE dimension								
Special design according text specification								

	TKN kNm	TKMax KNm	Speed Rpm-max	Ød bore Max mm	A mm	B mm	L mm	T mm	M mm	DBSE mm	Weight kg
F-DI											
96	1,9	4,2	3000	52	98	68	60	6	90	3	6,1
122	2,9	6,8	2500	62	118	86	70	6	110	3	10,3
148	5,7	14	2000	78	150	105	85	8	138	3	18,2
178	9	21,5	1800	98	173	132	95	8	161	5	33,0
203	14,5	35	1500	112	198	151	105	8	186	5	48,0
236	22,8	54,7	1350	132	228	179	120	12	215	6	75,0
270	34,8	83,5	1200	156	258	209	130	12	248	6	115,0
300	45,8	110	1100	174	288	234	150	12	273	8	161,0
335	70,8	170	950	190	318	255	175	12	300	8	227,0
368	85,4	205	900	210	348	280	190	12	329	8	292,0
400	150	360	800	233	393	306	220	12	374	8	363,0
460	200	480	700	280	448	356	250	16	356	10	526,0

TKN is calculated for 24H continuous operation and maximum 20 start-up per hour - For sizing see related page

TKMax is permitted only five times per hour

Different design and sizes are possible

Please note: couplings are supplied without lubricants. For lubricants see technical appendix