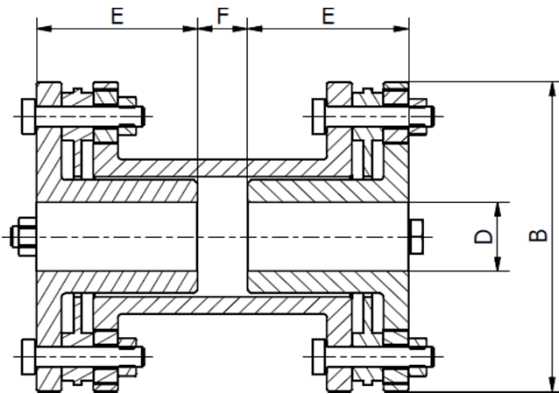


# FV-KUPPLUNG

## FV-D



- All steel coupling with reverse hub
- Axial compact design
- Plates AISI 304
- Maintenance free
- Backlash free
- Temperature range -40°C / + 150°C
- ATEX CE Ex - Possible on request

\* Design AD "only one reverse hub"

### PRODUCT CODE KEY - EXAMPLE

<b>FV</b>	<b>6</b>	<b>D</b>	<b>95</b>	<b>32</b>	<b>28</b>	<b>5</b>	<b>S</b>
Model							
Number of bolts							
Design							
Size							
Bore D1							
Bore D2							
<i>DBSE "F" fixed dimension for this design</i>							
Special design according text specification							

	TKN	TKMax	Speed	$\Delta kw$	$\Delta ka$	$\varnothing$ bore	B	E	F
	Nm	Nm	Rpm-max	(°)	mm	Max mm	mm	mm	mm
<b>FV-D</b>									
<b>6D-95</b>	650	1300	4200	0,7	$\pm 2.6$	32	120	65	5
<b>6D-110</b>	900	1800	4000	0,7	$\pm 2.9$	40	135	80	5
<b>6D-120</b>	1300	2600	3900	0,7	$\pm 3.1$	50	148	85	6
<b>6D-135</b>	2500	5000	3800	0,7	$\pm 3.4$	58	170	95	6
<b>6D-158</b>	2900	5800	3600	0,7	$\pm 3.8$	75	196	110	7
<b>6D-176</b>	5000	10000	3500	0,7	$\pm 4.1$	84	220	120	8
<b>6D-186</b>	6000	12000	3400	0,7	$\pm 4.3$	95	226	130	8
<b>6D-200</b>	6500	13000	3200	0,7	$\pm 4.5$	105	240	140	10

The permitted shaft misalignment are maximum values and must not occur in the same time.

TKN is calculated for 24H continuous operation and maximum 20 start-up per hour - For sizing see related page

TKMax is permitted only five times per hour

Different design and sizes are possible