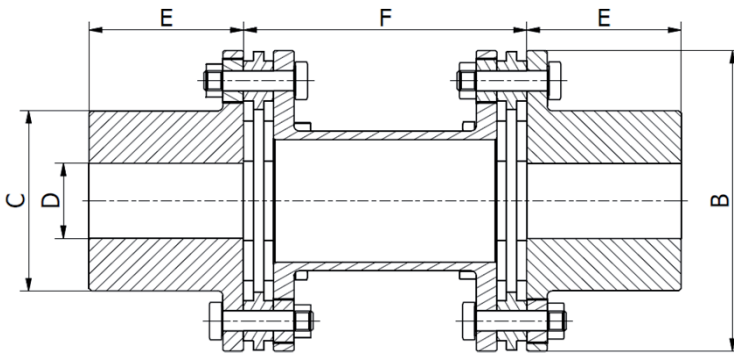


# FV-KUPPLUNG

## FV-A



- All steel coupling with intermediate spacer
- Plates AISI 304
- Available with 4-6-8 bolts
- Maintenance free
- Backlash free
- Temperature range -40°C / + 150°C
- ATEX CE Ex - Possible on request

### PRODUCT CODE KEY - EXAMPLE

FV	6	A	95	42	38	95	S
Model							
Number of bolts							
Design							
Size							
Bore D1							
Bore D2							
DBSE "F" dimension							
Special design according text specification							

	TKN Nm	TKMax Nm	Speed Rpm-max	Δkw (°)	Δka mm	∅ bore Max mm	B mm	C mm	E mm	F (DBSE) mm	
<b>FV-A</b>											
4A-70	160	320	4600	1,0	±2.5	38	90	50	40	90	95
4A-80	350	700	4400	1,0	±3.0	42	105	60	45	100	105
6A-95	650	1300	4200	0,7	±2.6	55	120	72	60	110	135
6A-110	900	1800	4000	0,7	±2.9	65	135	82	70	120	165
6A-120	1300	2600	3900	0,7	±3.1	70	148	86	80	130	180
6A-135	2500	5000	3800	0,7	±3.4	80	170	100	90	150	200
6A-158	2900	5800	3600	0,7	±3.8	95	196	115	100	160	o.r.
6A-176	5000	10000	3500	0,7	±4.1	100	220	125	110	170	o.r.
6A-186	6000	12000	3400	0,7	±4.3	110	226	136	120	180	o.r.
6A-200	6500	13000	3200	0,7	±4.5	120	240	146	125	190	o.r.
8A-210	9000	22000	3100	0,5	±2.0	125	250	155	140	200	o.r.
8A-230	15000	30000	3000	0,5	±2.2	140	277	176	160	210	o.r.
8A-245	21000	42000	3000	0,5	±2.3	150	297	190	160	210	o.r.
8A-262	25000	50000	2900	0,5	±2.5	160	316	200	180	220	o.r.
8A-283	33000	66000	2800	0,5	±2.8	170	345	220	190	230	o.r.
8A-300	40000	80000	2500	0,5	±3.0	185	365	235	210	240	o.r.
8A-320	50000	100000	2300	0,5	±3.2	200	390	248	225	250	o.r.
8A-350	65000	130000	2100	0,5	±3.5	220	420	270	250	260	o.r.

The permitted shaft misalignment are maximum values and must not occur in the same time.

TKN is calculated for 24H continuous operation and maximum 20 start-up per hour - For sizing see related page

TKMax is permitted only five times per hour

Different design and sizes are possible